

## Study Purpose

The purpose of this Corridor Study is to examine the existing and future needs of both 25th Street and 64th Avenue South in Fargo and plan for their future improvements. The Study's limits on 25th Street will be from 52nd Avenue South to 100th Avenue South and the limits along 64th Avenue South will be University Drive to 57th Street. This

study will define a series of recommendations to address both the short- and long-term needs. The short-range recommendations will include right of way preservation, traffic control need and safety. The long-range needs will include future roadway cross sections, drainage, horizontal alignment, access control and funding.

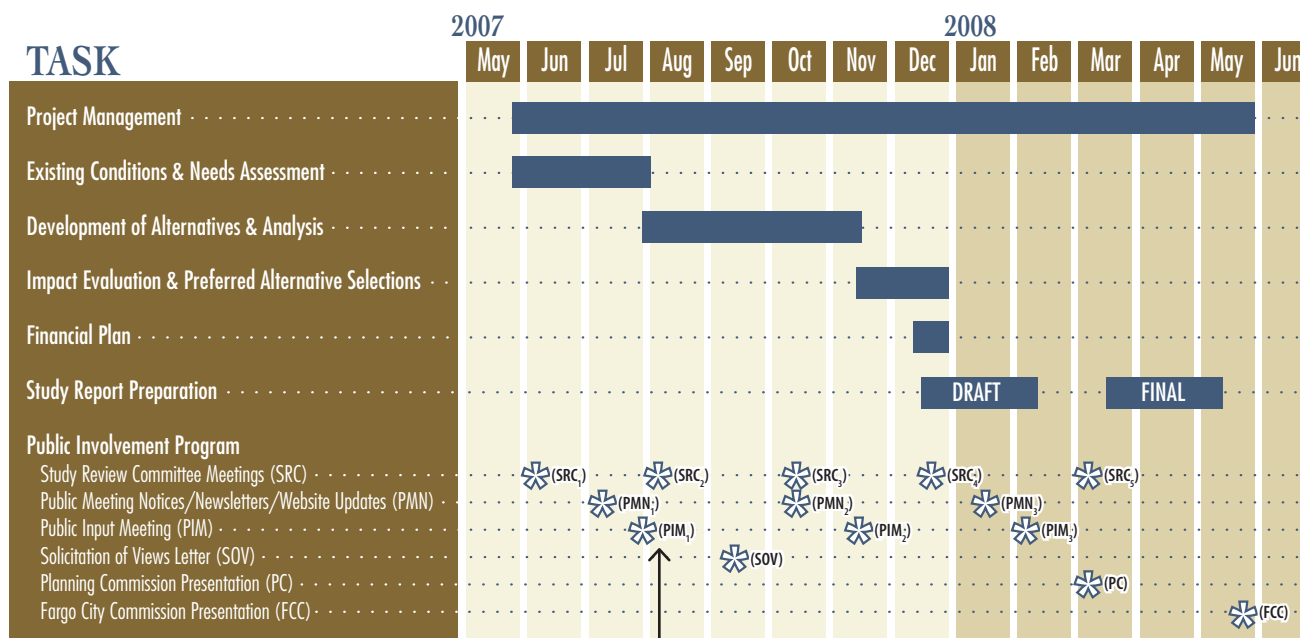
*Due to the expanding growth, it is very important for the City to identify both existing and future roadway sections and right of way needs, and develop access management plans prior to more development in the study area*

## Project Issues

Important issues to be analyzed and included in the study report:

- Safety
- Access Control
- Right of Way Needs/Preservation
- Preliminary Roadway Layouts
- Overpass or interchange of I-29 at 64th Avenue South
- Bicycle and Pedestrian Needs
- Corridor Aesthetics
- Utility Needs
- Future Project Cost
- Impact to Existing Residential Property
- Public Input
- Selection of a Preferred Alternative

## Project Schedule



First Opportunity  
for Public Input

## You're Invited Public Meeting Announcement

**Tuesday August 7, 2007**

**5:00 p.m. to 7:00 p.m.**  
With formal presentation at 5:30 P.M.

**Bennett Elementary School**

Located at:  
**2000 58th Avenue South**  
**in the Multi Purpose Room**  
**Enter on the west side of the school.**

The purpose of this public meeting is to solicit the public's input regarding future development of the study corridors.

## Public Participation Process

### Study Review Committee (SRC) –

This committee includes representatives from the City of Fargo, City of Horace, North Dakota Department of Transportation, Cass County, Metro COG, and Stanley Township. The Study Review Committee will conduct five meetings to guide the study process and provide input at key points of the study process.

### Open House Public Meetings –

The public meetings are open to the general public with special invites sent to those who are living near the project area. Three public meetings will be held throughout the study process. The first meeting will be held to solicit public input on existing conditions; and opportunities for future development of the corridors. The second meeting will be held to

propose future traffic projections and seek public input on proposed alternatives. The third and final public meeting will be held to present and seek input for the draft corridor study report.

### Fargo Planning Commission –

The draft study report executive summary will be presented to the Fargo Planning Commission after

the third public meeting. The planning commission will have the opportunity to review and comment on the draft recommendations.

### Fargo City Commission –

The final study report executive summary will be presented to the Fargo City Commission for consideration and adoption.

## Questions to Bring to The Meeting

Which Project Issues are You Most Concerned About?

---



---



---

Is There A Concern You Have Along These Corridors That You Think We Should Investigate?

---



---



---

Are There Any Features Along These Corridors You Would Like to See Preserved or Removed?

---



---



---

*Public involvement is a cornerstone of our study approach. Our philosophy is that the process must be collaborative - not just informative.*

## Visit Us on the Web

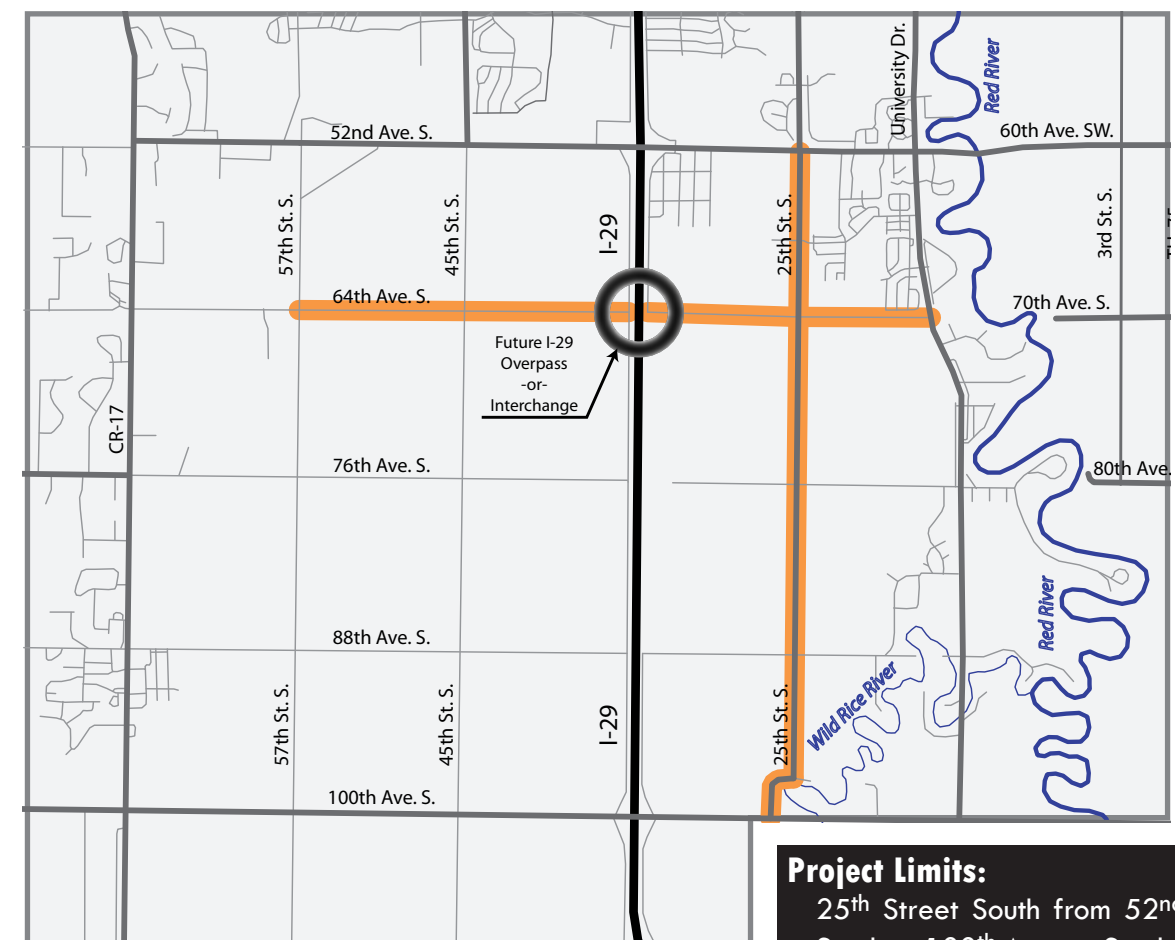
<http://www.cityoffargo.com/CityInfo/Departments/Engineering/CityProjects/25thStreet64thAvenueCorridorStudy.aspx>

## Contact Information

City of Fargo  
Jeremy Gorden, P.E.  
Senior Engineer – Transportation  
Ph: 701-241-1529 Fax: 701-241-8108  
jgorden@ci.fargo.nd.us

SRF Consulting Group, Inc.  
Richard Lane, P.E.  
Principal  
Ph: 701-237-0010 Fax: 701-237-0017  
rlane@srfconsulting.com

## Study Location



### Project Limits:

25<sup>th</sup> Street South from 52<sup>nd</sup> Avenue South to 100<sup>th</sup> Avenue South and 64<sup>th</sup> Avenue South from University Drive to 57<sup>th</sup> St. S.